

PS-SEAL®

Application Data Sheet

Contact Information

Company _____
 Name _____
 Phone _____
 Email _____
 Country _____
 Demand _____
 Annual Demand _____

Other manufacturers Information

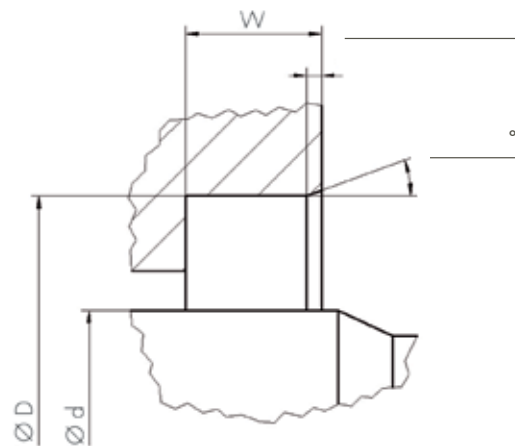
Company _____
 Item Code _____
 Seal Model _____
 Lip Material _____
 Housing Material _____
 Garlock ID _____

Application Data

Shaft diameter d [mm] _____
 Housing diameter D [mm] _____
 Depth w [mm] _____
 Shaft speed [m/s] _____
 Shaft deflection [mm] _____
 Shaft misalignment [mm] _____
 Dry running Yes No
 FDA Yes No
 Medium Side A _____
 Medium Side B _____
 Absolute pressure [bar(a)] Side A
1 bar (a) = ambient pressure _____
 Absolute pressure [bar(a)] Side B
1 bar (a) = ambient pressure _____
 Temperature [°C] Side A _____
 Temperature [°C] Side B _____

Side A

Side B



Surface roughness

Ra _____
 Rz _____
 Rmax _____

Surface hardness

(HCR) _____

Remarks

GARLOCK GMBH

an Enpro Company

Falkenweg 1, 41468 Neuss, Germany

+49 2131 349 0

garlockgmbh@garlock.com

www.garlock.com

Garlock Sealing Technologies

Garlock USA

Garlock Australia

Garlock Canada

Garlock China

Garlock Germany

Garlock India

Garlock de México

Garlock New Zealand

Garlock Singapore