

## KLOZURE® and PS-SEAL®

### Application Data Sheet

#### Contact Information

Company \_\_\_\_\_  
 Name \_\_\_\_\_  
 Phone \_\_\_\_\_  
 Email \_\_\_\_\_  
 Country \_\_\_\_\_  
 Demand \_\_\_\_\_  
 Annual Demand \_\_\_\_\_

#### Other manufacturers Information

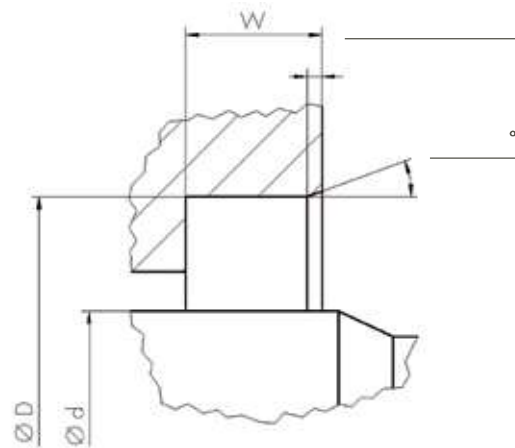
Company \_\_\_\_\_  
 Item Code \_\_\_\_\_  
 Seal Model \_\_\_\_\_  
 Lip Material \_\_\_\_\_  
 Housing Material \_\_\_\_\_  
 \_\_\_\_\_  
 Garlock ID \_\_\_\_\_

#### Application Data

Shaft diameter  $d$  [mm] \_\_\_\_\_  
 Housing diameter  $D$  [mm] \_\_\_\_\_  
 Depth  $w$  [mm] \_\_\_\_\_  
 Shaft speed [m/s] \_\_\_\_\_  
 Shaft deflection [mm] \_\_\_\_\_  
 Shaft misalignment [mm] \_\_\_\_\_  
 Dry running Yes  No   
 FDA Yes  No   
 Medium Side A \_\_\_\_\_  
 Medium Side B \_\_\_\_\_  
 Absolute pressure [bar(a)] Side A \_\_\_\_\_  
1 bar (a) = ambient pressure  
 Absolute pressure [bar(a)] Side B \_\_\_\_\_  
1 bar (a) = ambient pressure  
 Temperature [°C] Side A \_\_\_\_\_  
 Temperature [°C] Side B \_\_\_\_\_

Side A

Side B



Surface roughness

Surface hardness

Ra \_\_\_\_\_ (HCR) \_\_\_\_\_  
 Rz \_\_\_\_\_  
 Rmax \_\_\_\_\_

#### Remarks

\_\_\_\_\_  
 \_\_\_\_\_  
 \_\_\_\_\_

**GARLOCK GMBH**

an Enpro Company

Falkenweg 1, 41468 Neuss, Germany

+49 2131 349 0

garlockgmbh@garlock.com

www.garlockeurope.com

United States of America

Canada

Mexico

Germany

China

Singapore

Taiwan

Australia